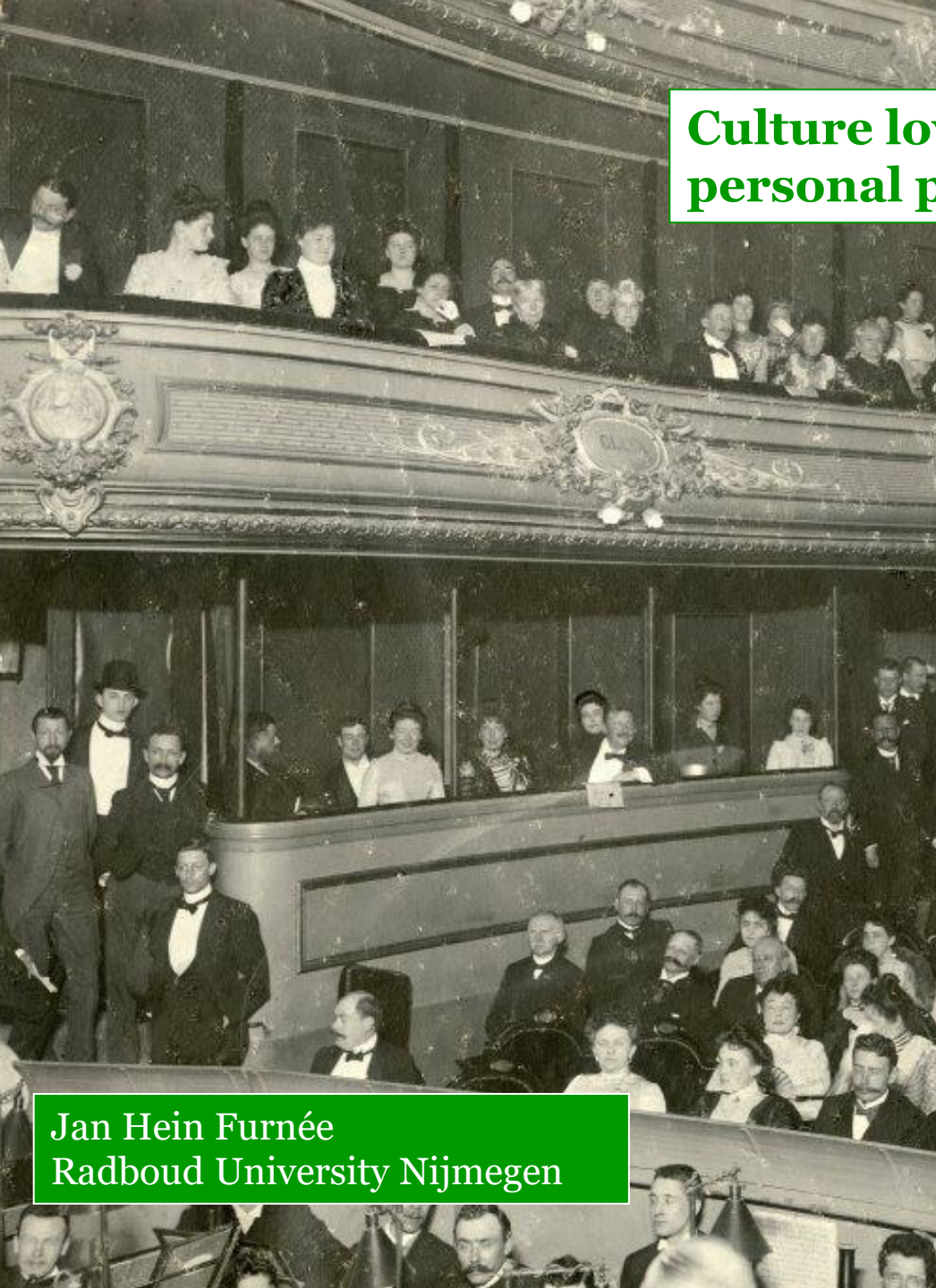




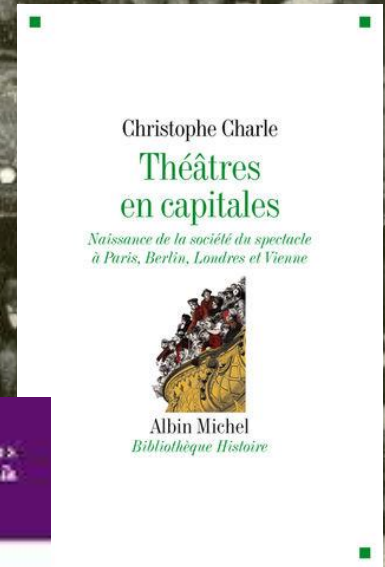
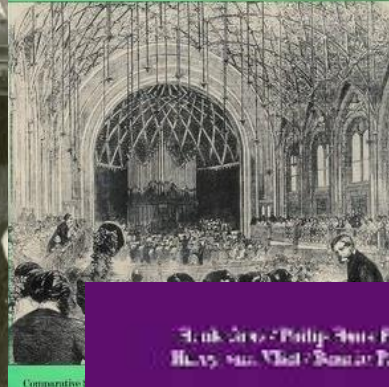
Culture lovers. Social structures and personal preferences in the 19th century

Jan Hein Furnée
Radboud University Nijmegen

Culture lovers. Social structures and personal preferences in the 19th century



MUSIC AND THE MIDDLE CLASS
William Weber

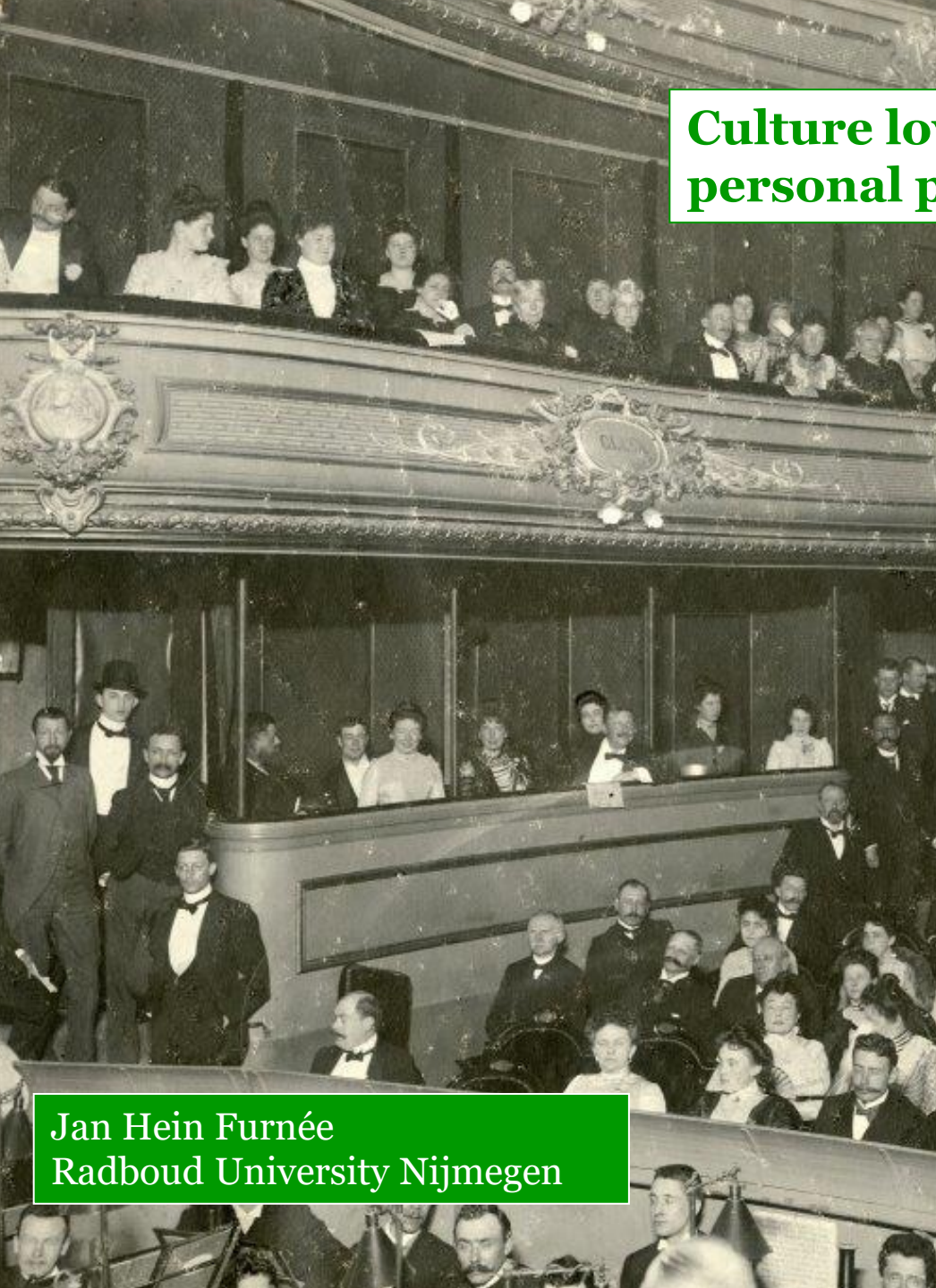


Frankfurt · Philipps-Universität
Hamburg · Universität
L'Université de



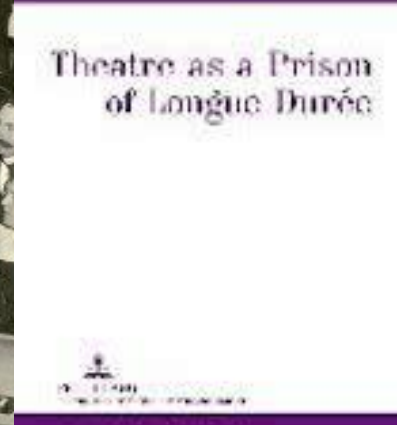
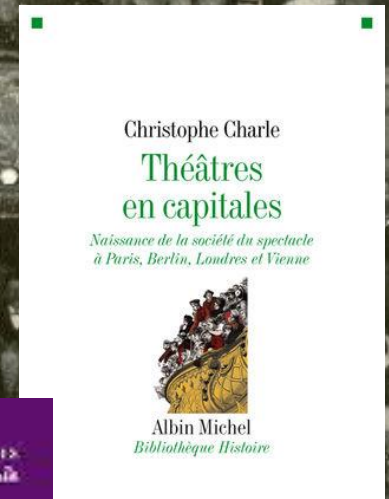
Jan Hein Furnée
Radboud University Nijmegen

Culture lovers. Social structures and personal preferences in the 19th century



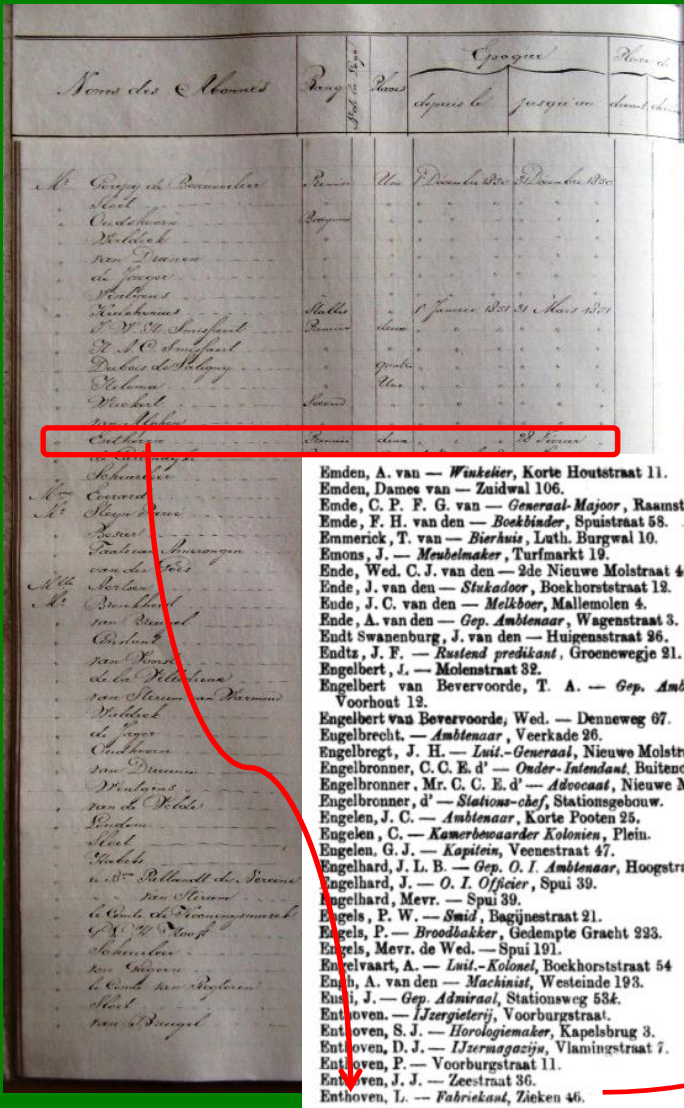
MUSIC AND THE MIDDLE CLASS

William Weber



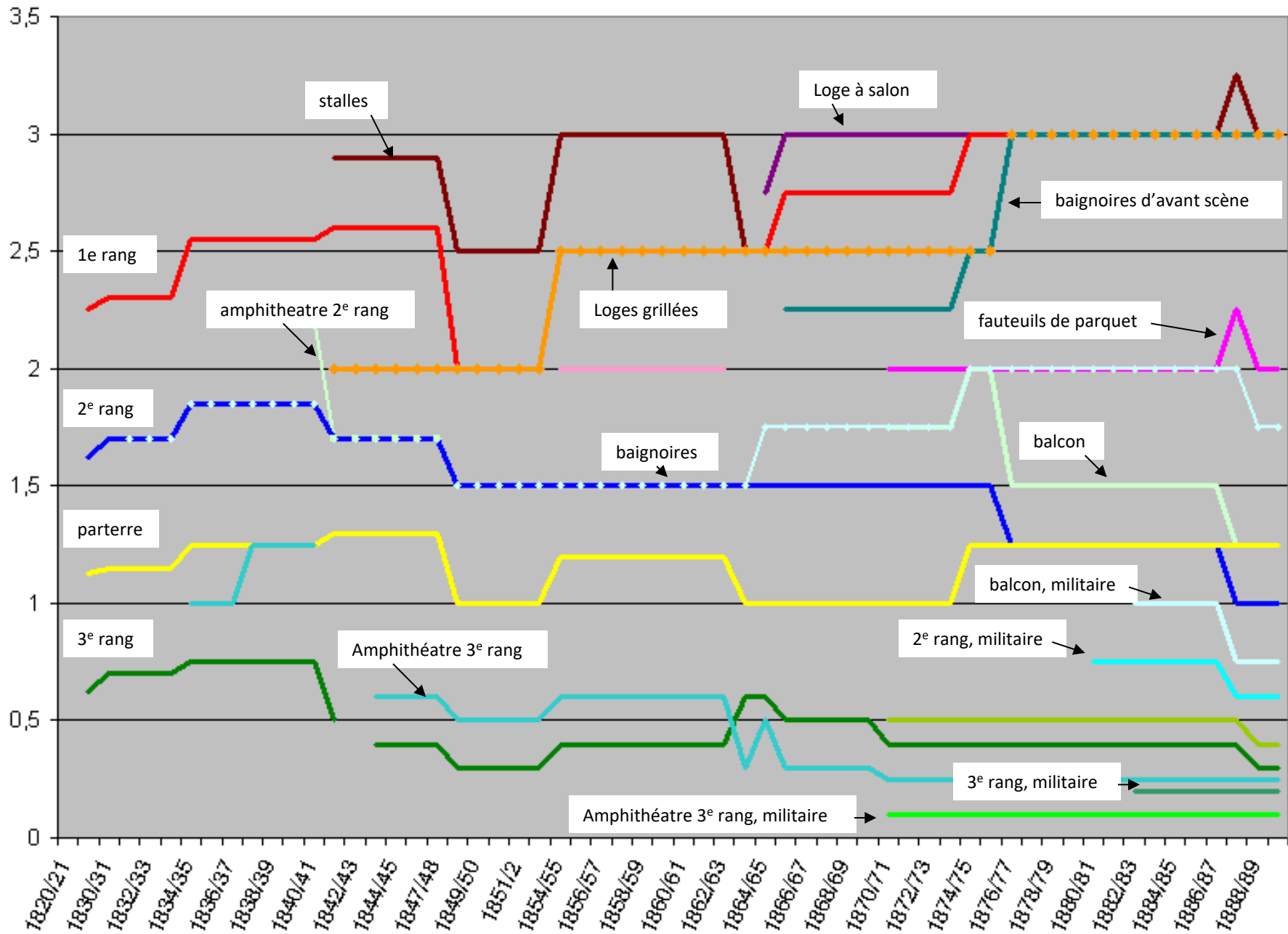
Jan Hein Furnée
Radboud University Nijmegen

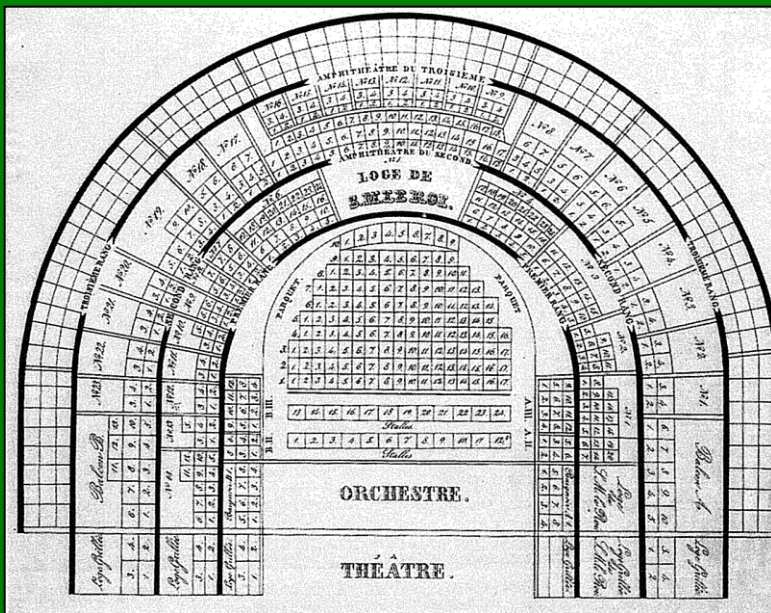
Subscribers French opera, 1850-1887



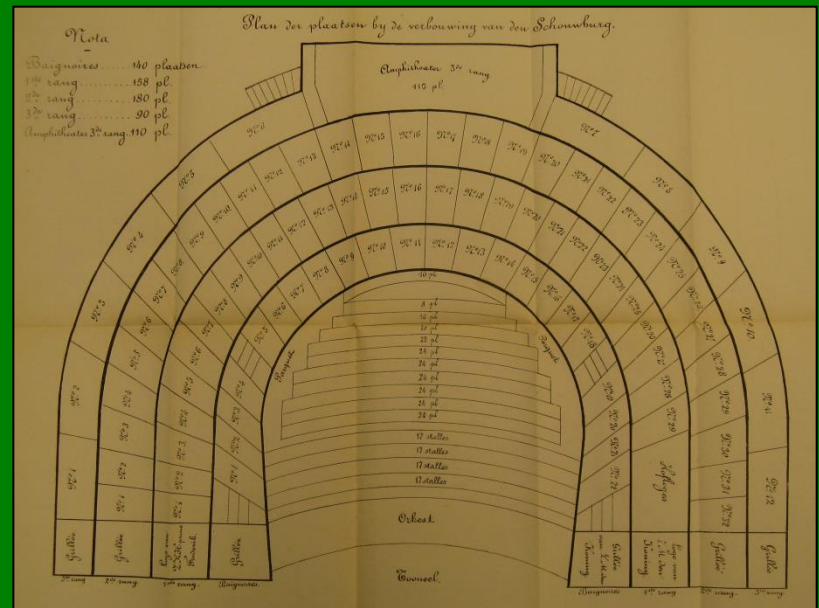
- Emden, A. van — *Winkelier*, Korte Houtstraat 11.
- Emden, Dames van — Zuidwal 106.
- Emde, C. P. F. G. van — *Generaal-Majoor*, Raamstr.
- Emde, F. H. van den — *Boekbinder*, Spuistraat 58.
- Emmerick, T. van — *Bierhuis*, Luth. Burgwal 10.
- Emons, J. — *Meubelmaker*, Turfmarkt 19.
- Ende, Wed. C. J. van den — 2de Nieuwe Molstraat 46.
- Ende, J. van den — *Stukadoor*, Boekhorststraat 12.
- Ende, J. C. van den — *Melkboer*, Mallemolen 4.
- Ende, A. van den — *Gep. Ambtenaar*, Wagenstraat 3.
- Endt Swanenburg, J. van den — Huijgensstraat 26.
- Endtz, J. F. — *Rustend predikant*, Groenewegje 21.
- Engelbert, J. — Molenstraat 32.
- Engelbert van Bevervoorde, T. A. — *Gep. Ambt Voorhout* 12.
- Engelbert van Bevervoorde, Wed. — Denneweg 67.
- Engelbrecht. — *Ambtenaar*, Veerkade 26.
- Engelbregt, J. H. — *Luit.-Generaal*, Nieuwe Molstraat
- Engelbronner, C. C. E. d' — *Onder-Intendant*, Buitenhof
- Engelbronner, Mr. C. C. E. d' — *Advocaat*, Nieuwe M.
- Engelbronner, d' — *Stations-chef*, Stationsgebouw.
- Engelen, J. C. — *Ambtenaar*, Korte Pooten 25.
- Engelen, C. — *Kamerbewaarder Kolonien*, Plein.
- Engelen, G. J. — *Kapitein*, Vecnestraat 47.
- Engelhard, J. L. B. — *Gep. O. I. Ambtenaar*, Hoogstraat
- Engelhard, J. — *O. I. Officier*, Spui 39.
- Engelhard, Mevr. — Spui 39.
- Engels, P. W. — *Smid*, Bagijnestraat 21.
- Engels, P. — *Broodbakker*, Gedenpote 233.
- Engels, Mevr. de Wed. — Spui 191.
- Engelvaart, A. — *Luit.-Kolonel*, Boekhorststraat 54
- Engb, A. van den — *Machinist*, Westeinde 193.
- Eusi, J. — *Gep. Admiraal*, Stationsweg 53f.
- Enthoven. — *IJzergieterij*, Voorburgstraat.
- Enthoven, S. J. — *Horologiemaker*, Kapelsbrug 3.
- Enthoven, D. J. — *IJzernagaczijs*, Vlamingstraat 7.
- Enthoven, P. — Voorburgstraat 11.
- Enthoven, J. J. — Zeestraat 36.
- Enthoven, L. — *Fabriekant*, Zieken 46.

	1850/51		1858/59		1863-64		1885-87	
Nobility	41	35%	16	29%	42	36%	13	24%
Distinguished of position (diplomats, court dignitaries, state officials, magistrates)	16	14%	9	16%	17	16%	4	7%
Civil servants & military officers	16	14%	9	16%	28	26%	9	17%
Professions and semi-intellectual occupations	3	3%	7	13%	8	7%	5	9%
Financial and industrial entrepreneurs	4	3%	3	5%	6	6%	2	4%
Artisans			2	4%	1	1%		
Shopkeepers	1	1%			2	2%		
Other independent			1	2%	2	2%	1	2%
No occupation/position	53	46%	1	2%	35	32%	30	56%
=> of which women	12	10%	18	33%	3	3%	15	28%
Unknown	21	18%			17	16%	3	6%
Total	116		5	9%	108		54	

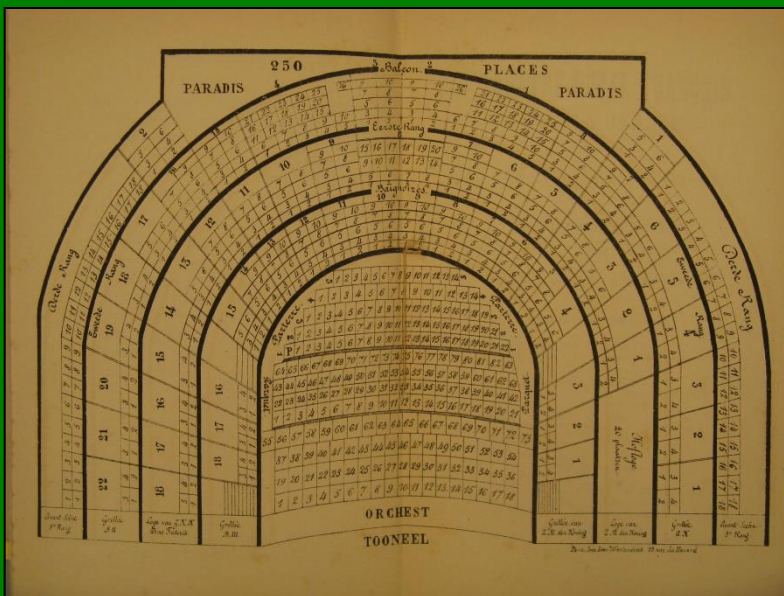




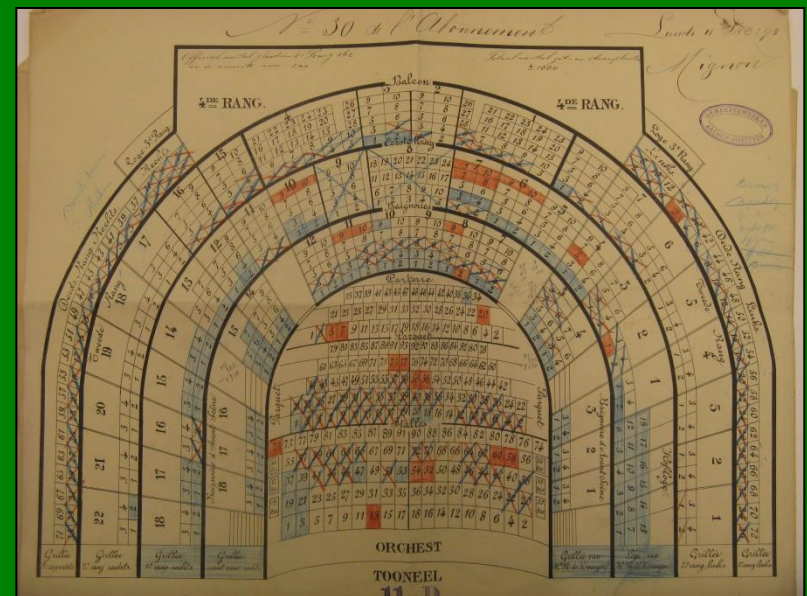
ca. 1845



1863



1879/80



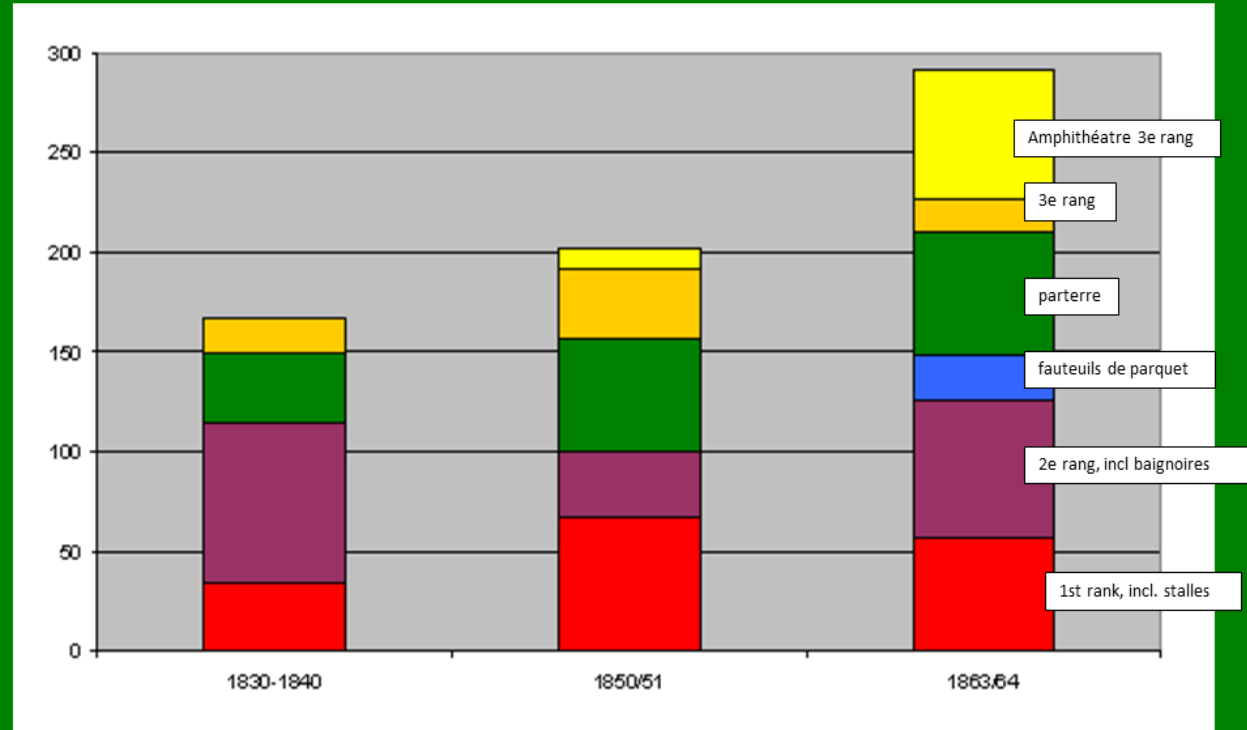
1893

Average ticket sales per performance, 1830-1864

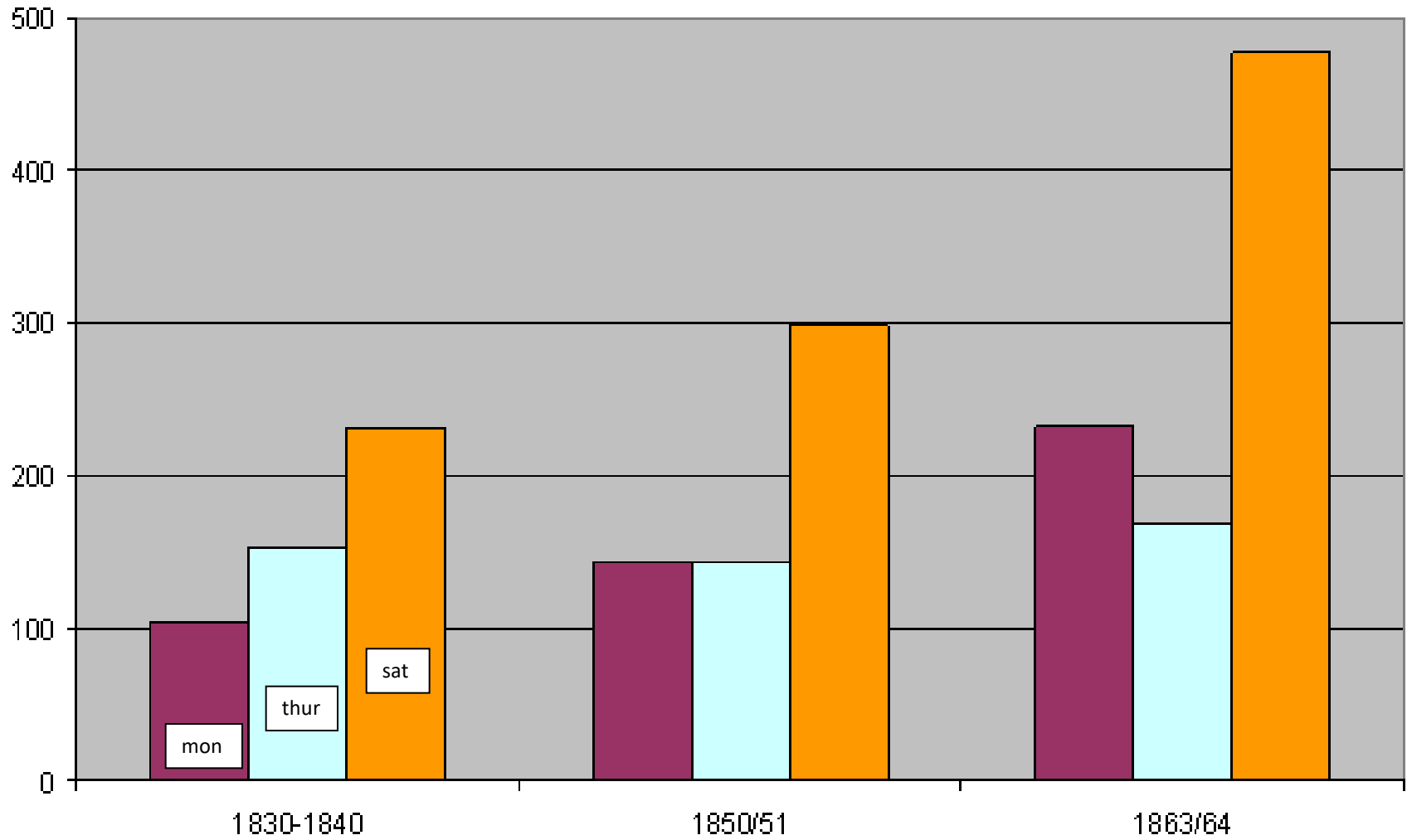
Grondplan
 van het
 Koninklijk
 Theatergebouw
 183 - 183
 Ontwerp van de 2e Januarij 1835

24	- Hoofz. plaatsen Eerste rang	à f 2. 30	32	72
38	... " Tweede rang	à - 1. 70	63	50
20	... " Bak	à - 1. 15	23	50
22	... " Derde rang	à - 0. 70	14	14
2	- Halve plaatsen Eerste rang	à - 1. 20	2	-
11	... " Tweede rang	à - 0. 85	9	35
13	... " Bak	à - 0. 60	11	34
26	... " Derde rang	à - 0. 35	16	14
	- Voorbetringen		16	25
	- Waarran de Toespraak 1835-1836		12	25
			313	313

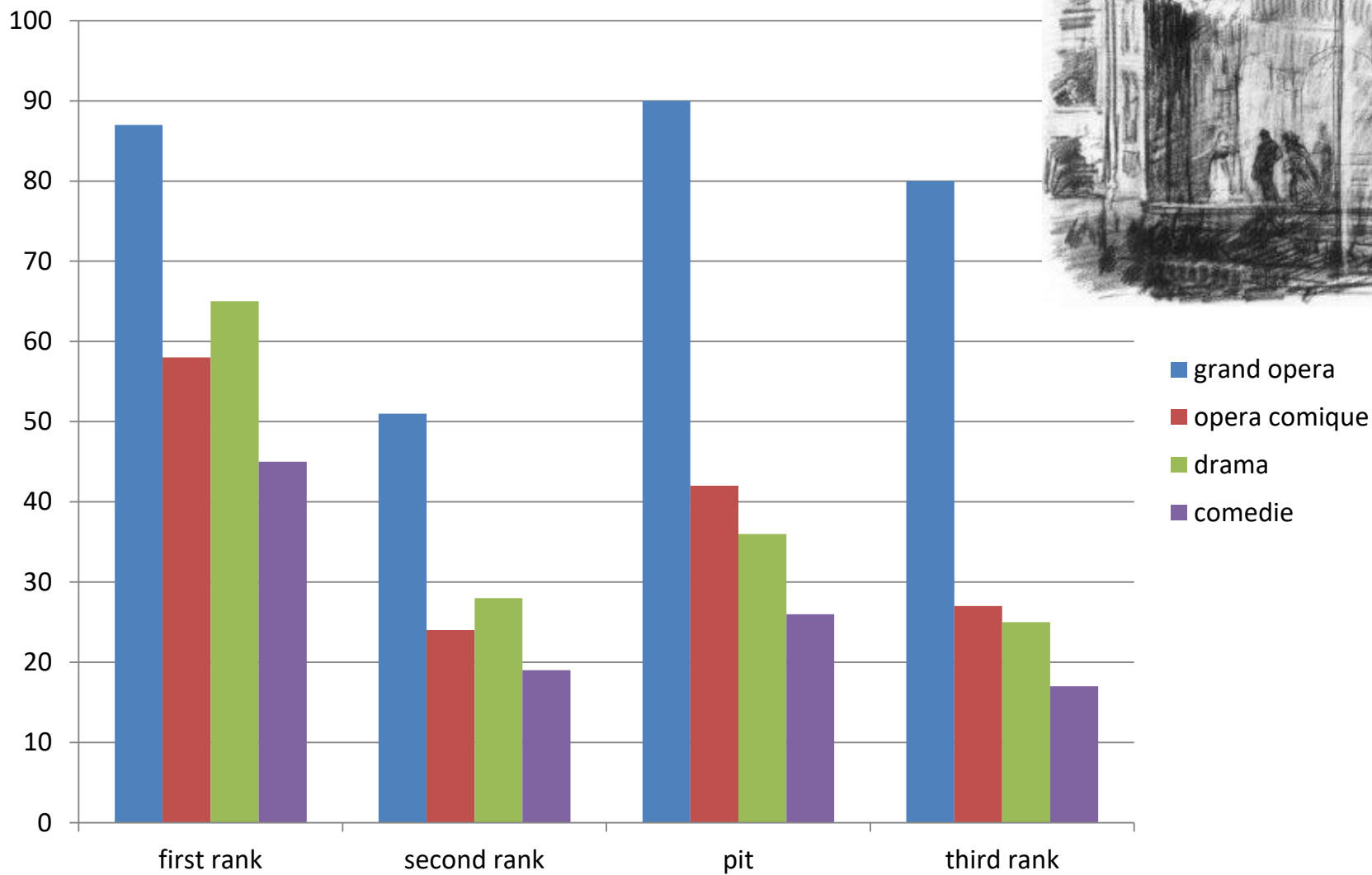
Accord besloten en afgekend.
 D'Ordeur
 J. G. M. de Meijer



Average ticket sales per weekday, 1830-1864



Average ticket sales per genre, 1850/51



Theatres and cultural associations Amsterdam, 1850



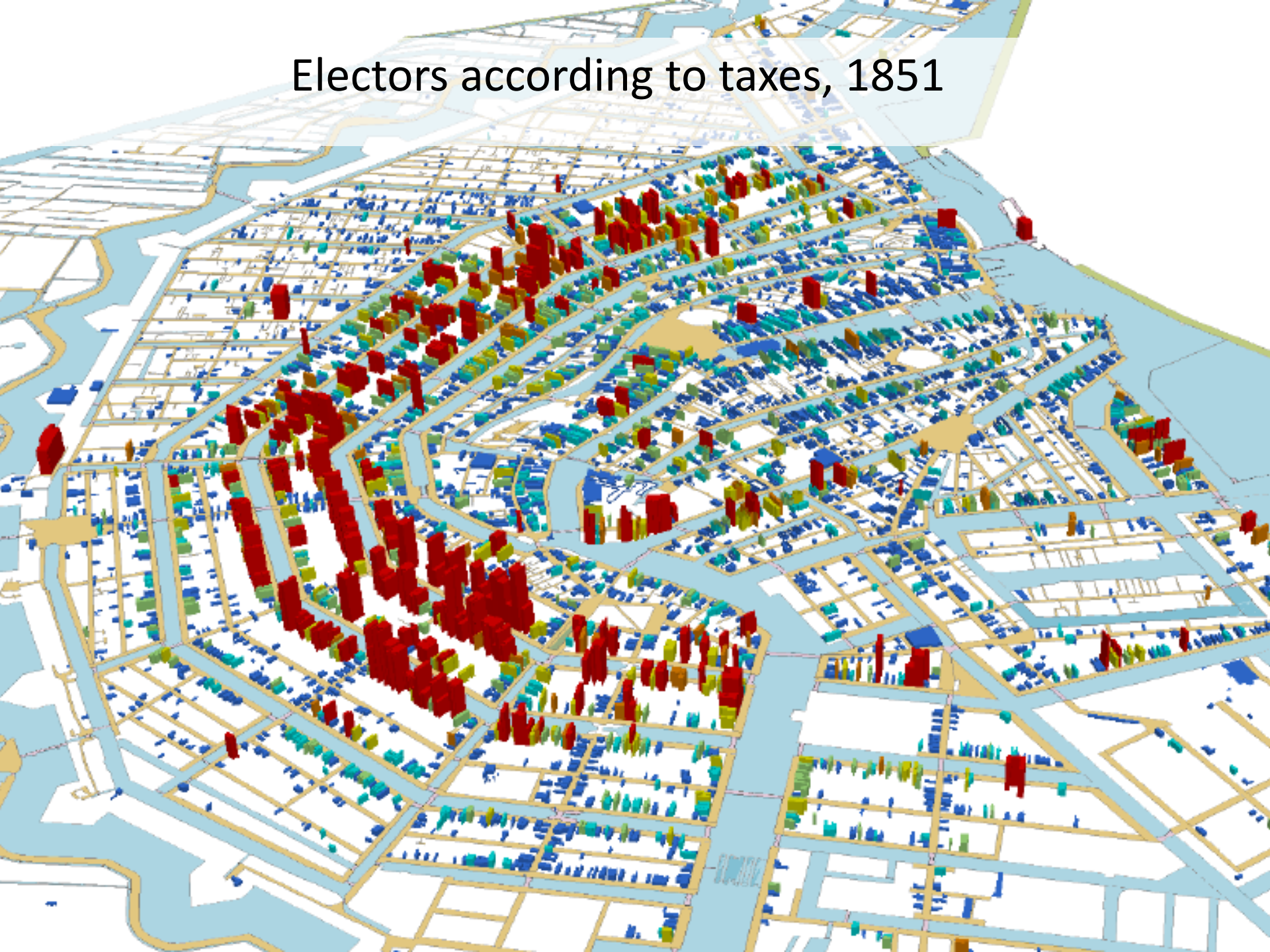
- theatre
- music
- visual arts
- literature & science

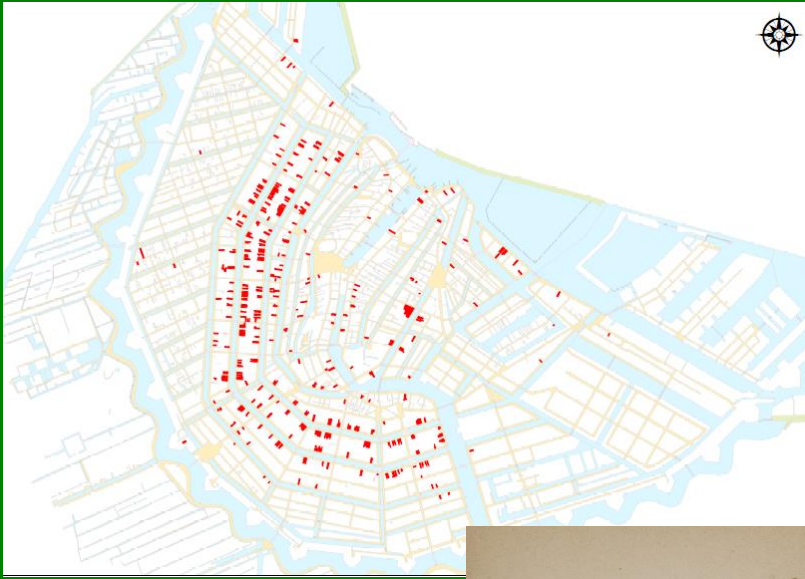


Members cultural associations Amsterdam, 1850

	Felix Meritis (symp. music)	Blaas en Strijklust (amateur orchestra)	Caecilia (symp. music)	Salon des Variétés	Leesmuseum (reading society)	Arti et Amicitiae (visual art)	Artis (zoological society)
Distinguished of position	9	4	3		10	5	26
Civil servants and military officers	4	6	2	1	10	7	40
Professions and semi-intellectual occupations (high)	39	11	9	6	72	10	133
Professions and semi-intellectual occupations (lower)	14		15	21	4	26	48
Financial entrepreneurs	34	4	13	1	7	12	122
Trade, shipping, book sellers	140	77	31	29	109	51	417
Manufacturers	8	4	1	6	4	4	21
artisans	4	2	6	7	5	8	53
Shopkeepers	6	2	10	17	1	9	126
Other independent			3	25	1	1	15
Employees			-	18			7
Other	4	2	1	7	4	3	7
No occupation	7	11	4	1	8	19	?
of which women				4			
Unknown	125	126	105	25	436	145	641
Total	394	249	203	168	671	300	1417

Electors according to taxes, 1851





Salon des Variétés, middle class theatre
(Sunday performances)



Felix Meritis, elite concert association

Degree of participation in 20 cultural associations

9 % of all adult men (57.000)

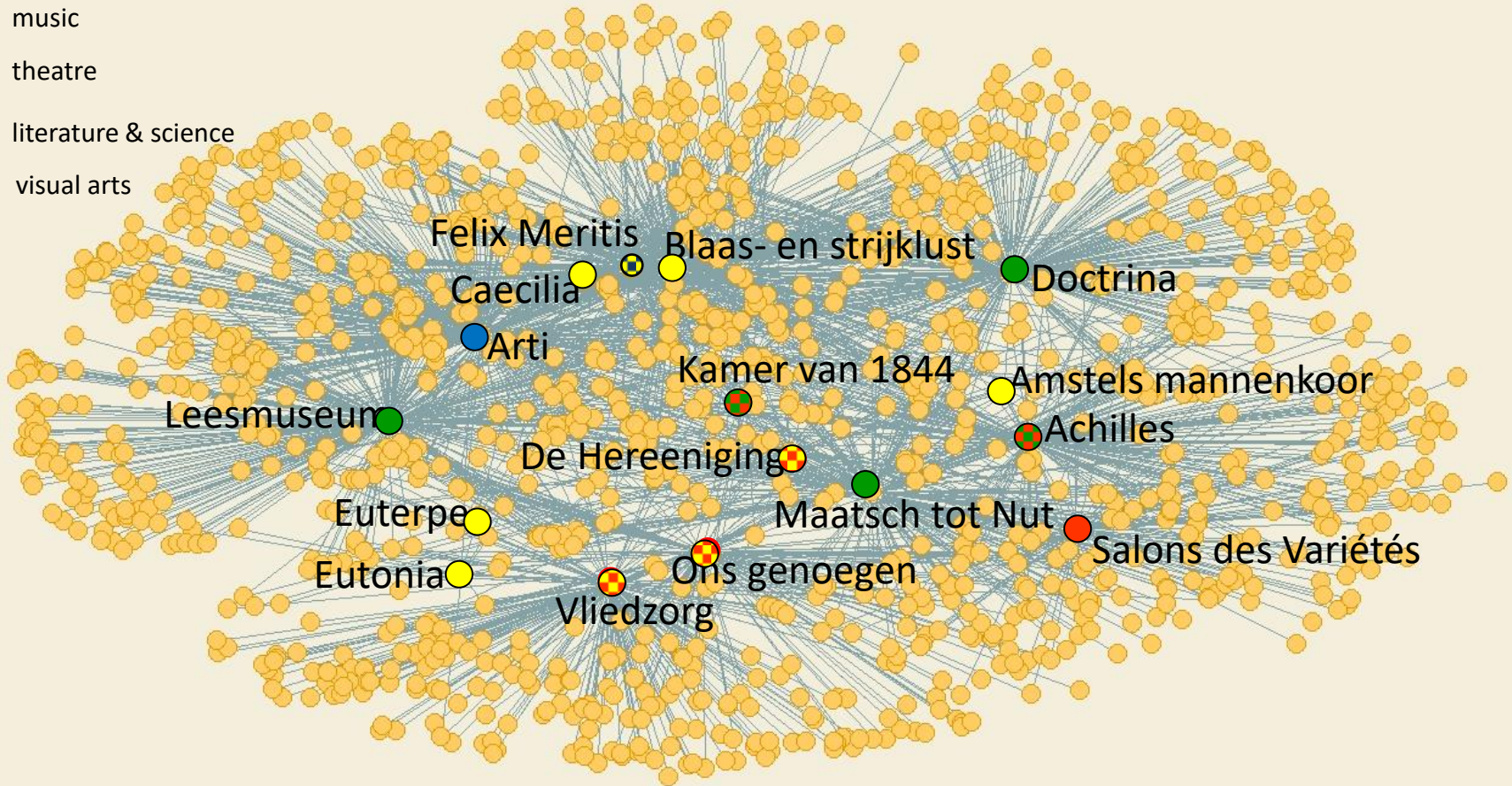
36 % of electors local council (6175)

78% of electors > fl. 100 personal tax (1746)

92% of electors > fl. 200 personal tax (604)

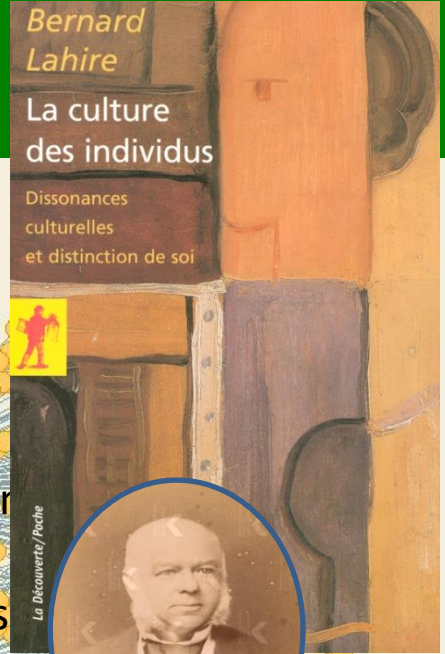
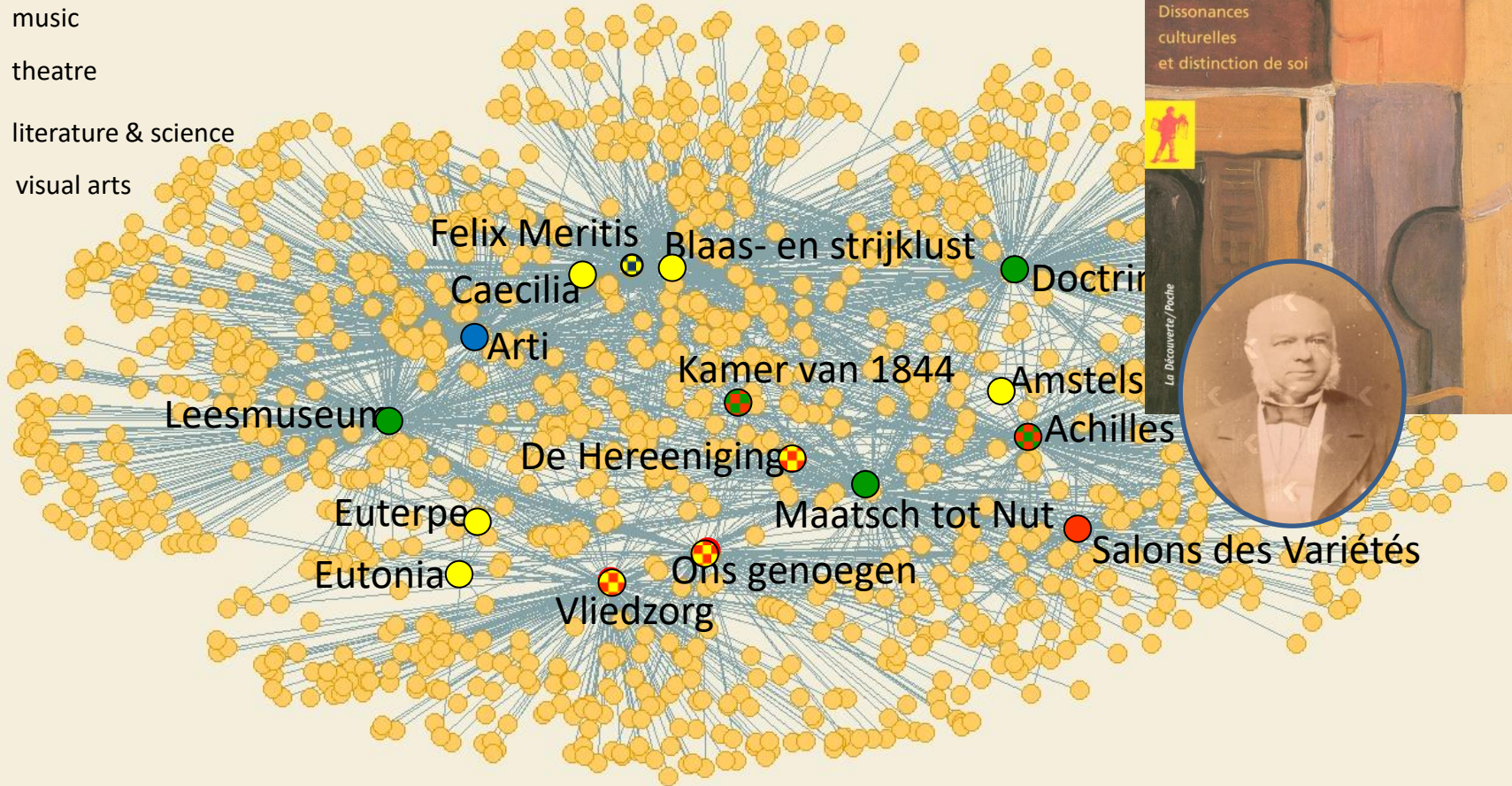
Cultural associations, linked by double membership

- music
- theatre
- literature & science
- visual arts



Space for personal preferences

- music
- theatre
- literature & science
- visual arts



Concluding remarks



